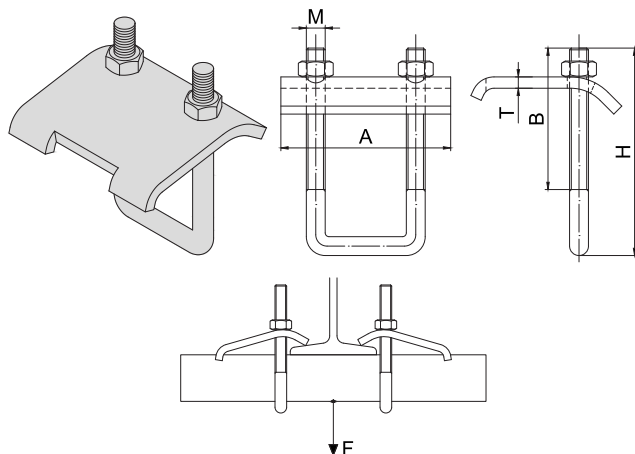


DRAPÁKOVÝ NOSNÍK FIX

RAIL BEAM CLAMP FIX



Description:

The rail beam clamp is designed for attachment of fixing rails on rolled beams. This mounting component doesn't need neither drilling nor welding for attachment. Additional moving and aligning of fixing rails can be carried out at any time. Thanks to various lengths of stirrups the rail beam clamp can be fixed to all common steel beams I, IPE, U, UPE, HEA, HEB.

Technické údaje / Technical data:

Materiál / Material:	ocel třídy 5.6 / steel class 5.6
Povrchová úprava / Surface coating:	galvanicky pozinkováno / zinc plated

Obj. číslo Supply No.	Název Name	A (mm)	B (mm)	F (kN)	H (mm)	M Závit/Thread	T (mm)	Vhodné pro profil Suitable for profile	Balení Package (ks/pcs)
39005001	Drapakový nosník / Rail beam clamp / M8 FIX 27x18, 28x30	70	45	2,8	80	M8	5	27x18, 28x30	30
39005002	Drapakový nosník / Rail beam clamp / M10 FIX 38x40, 40x60, ST41x21-62	90	75	8,0	110	M10	6	38x40, 40x60, ST41x21-62	20
39005003	Drapakový nosník / Rail beam clamp / M12 FIX 38x40, 40x60, ST41x21-124	90	140	9,0	190	M12	8	38x40, 40x60, ST41x21-124	10

Montážní postup / Mounting procedure:

